



INTEGRATED SECURITY, PORTSMOUTH TENNIS PAVILION

INTEGR8

innovative roller shutters

PRODUCTS FEATURED: Integr8 Structural Built-In Security Shutters

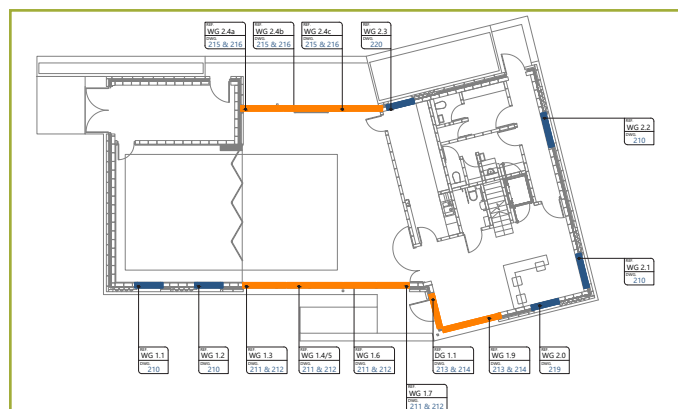
Set in the picturesque leisure grounds of Canoe Lake Park in Southsea, the Portsmouth Tennis Pavilion has achieved a number of architectural awards. Charter Global were approached early on during inception of the £1.33m project to provide a security solution that would not alter the building's unique flair.

Working to tight deadlines - the grounds were to host the tennis Wimbledon pre-qualifiers later on in the year - Charter Global worked closely with both architectural firm and contractor to deliver over 16 bespoke lintel security shutters within schedule. The centre itself is a two storey, multi-purpose space including a cafe, dance studio and changing facilities.

With requirements for ventilation and tight margins, each shutter features a bespoke perforated lath. Integr8 Shutters are the only manufacturer on the market able to deliver a shutter system such as this on a project specific basis. The lath profile resulted in small roll zones, meaning the entire curtain can be discreetly tucked away within the structural

lintel. When deployed the security shutters provide a high performance layer of protection against both intruder and vandalism.

As highlighted in orange (see below for Concept Drawing), the bespoke lintel shutters were supplied and installed with removable guides and flexible posts to completely open the space to visitors. The perforated lath then allowed for privacy through-out the interior without affecting the natural light and air flow. When dark, the outside area also benefits from the light within creating further appeal.



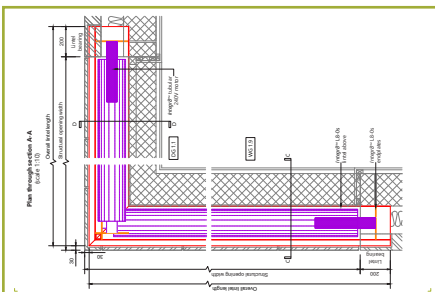
The corner post featured below was a particular success for Integr8 Shutters. Requiring flexibility above all else, the brilliant minds of Charter Global Design were able to conceptualise a **layered corner lintel system** (see drawing below). Again, the removable guides here allowed for flexible use of the shutters.

With a base constructed of wide grey bricks, the security shutters were supplied in a complimenting light grey to specification. The shutters were also anodised to combat the harsh coastal climate being so close to the ocean.

Engineered fit for purpose, the Integr8 Shutters implemented on this stunning project work within both the restrictions of aesthetic and specification.

On completion, the Portsmouth Tennis Pavilion was opened by the Lord Mayor of Portsmouth, celebrating achievement with numerous architectural awards including the RIBA South Award 2018 and RIBA South West Client of the Year Award 2018.

Further guidance on Integr8 Structural Built-In Shutter can be accessed [available here](#)



INTEGR8

innovative roller shutters

Integr8 Shutters, Charter Global's specialist manufacturer of integrated security shutters. Offering the discerning specifier an innovative range of security solutions, Integr8 caters for the latest in construction technology including timber frame, traditional and off-site modular projects.

Integr8 Shutters serves all sectors including Commercial, Community, and Education. For further information, please visit our dedicated site: www.charter-global.com/integr8