



COASTAL PROPERTY SECURED AGAINST THREAT

equilux
security, style and
peace of mind

PRODUCTS FEATURED:

Equilux Built In Shutter
Equilux Built In Garage Door

Nearly 25 Equilux Shutters were installed on this beautiful coastal property in the South of France to secure the summer residence of a high profile public figure.

The three storey holiday home lies not 10 feet from the shore, in a picturesque town in the South of France. Whilst the crime rate is relatively low, the nature of the client's celebrity meant that the property needed to be secure both when empty and whilst the family were home.

Charter Global were able to provide a solutions to the project's architect's two main issues: **integration with an existing Building Management System (BMS)**, and finished to suit the client's request.

All of the shutters were all finished in antique bronze anodisation. The bronze provided a neat, flush finish with the windows and external doors whereas the anodisation was required due to the location. With an all-aluminium construction, the shutters

are susceptible to rust when exposed to extreme conditions - such as the Ligurian Sea - therefore marine grade specification was provided.

The shutters were connected to the property's master control system and can be controlled remotely, through Bluetooth or other independently controlled switches.



COASTAL PROPERTY SECURED AGAINST THREAT A CHARTER GLOBAL CASE STUDY

As pictured below in the architectural drawing of the first floor, security shutters were required for each external opening including both doorways and windows.

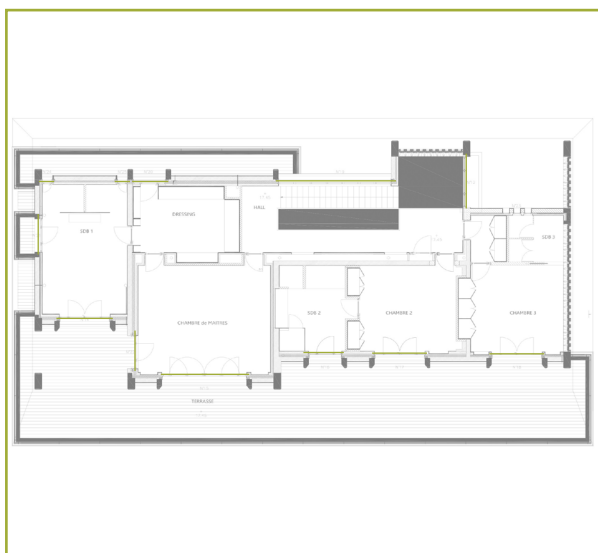
Each shutter was integrated within structural lintel, and featured a unique minimalistic rolling zone. Charter Global's renowned LockDown was also utilised to prevent the curtain from being forced open.

Provisions were also made for a number of perforated sections are the very top of the shutter to allow for air circulation without compromising

on security. When fully closed, the two-profile lath provided total blackout.

Other security measures included were obstacle detection and a status indication system. Obstacle detection prevents accidental damage to the shutter when it has been deployed, whereas status indication ensures the security integrity with confirmation of closure.

For further information on the Equilux Built In Shutter, please visit www.charter-global.com/equilux/shutters



equilux

security, style and
peace of mind

Equilux is the associate provider of high-performance, architecturally-conscious security solutions for the prime residential market.

Specialists in ensuring complete fortification, Equilux enhances the natural beauty of the property through intelligent and exacting manufacturing methods, along with superior finishes and coatings.

www.charter-global.com/equilux